

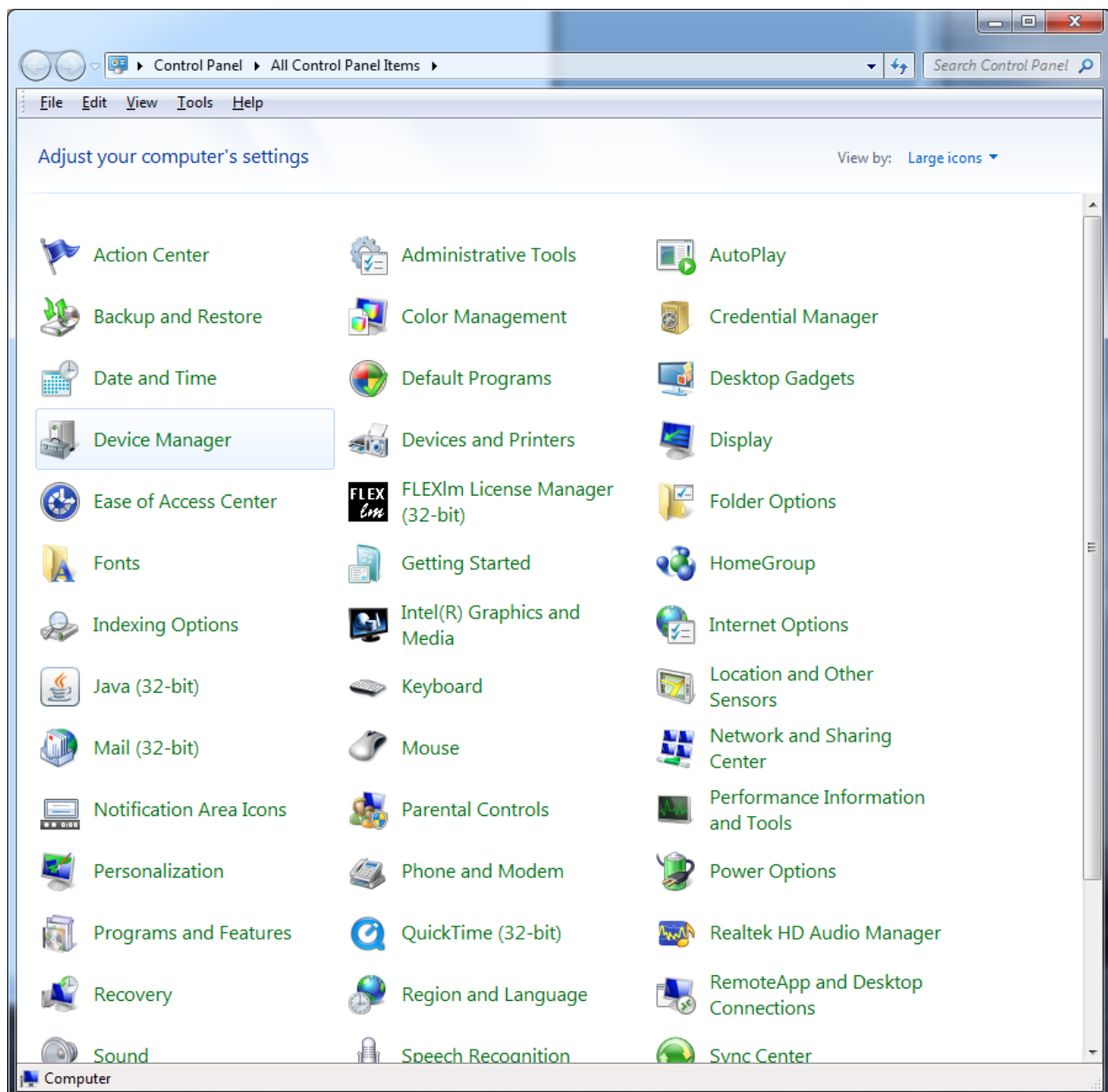
Driver Installation Windows 7

Two methods of loading the J-Works USB drive under Windows 7 are outlined in this document. The first is a manual load using the Device Manager. The second uses a program from Microsoft that loads the driver, and can be used in a batch program or script.

Manual Driver Load

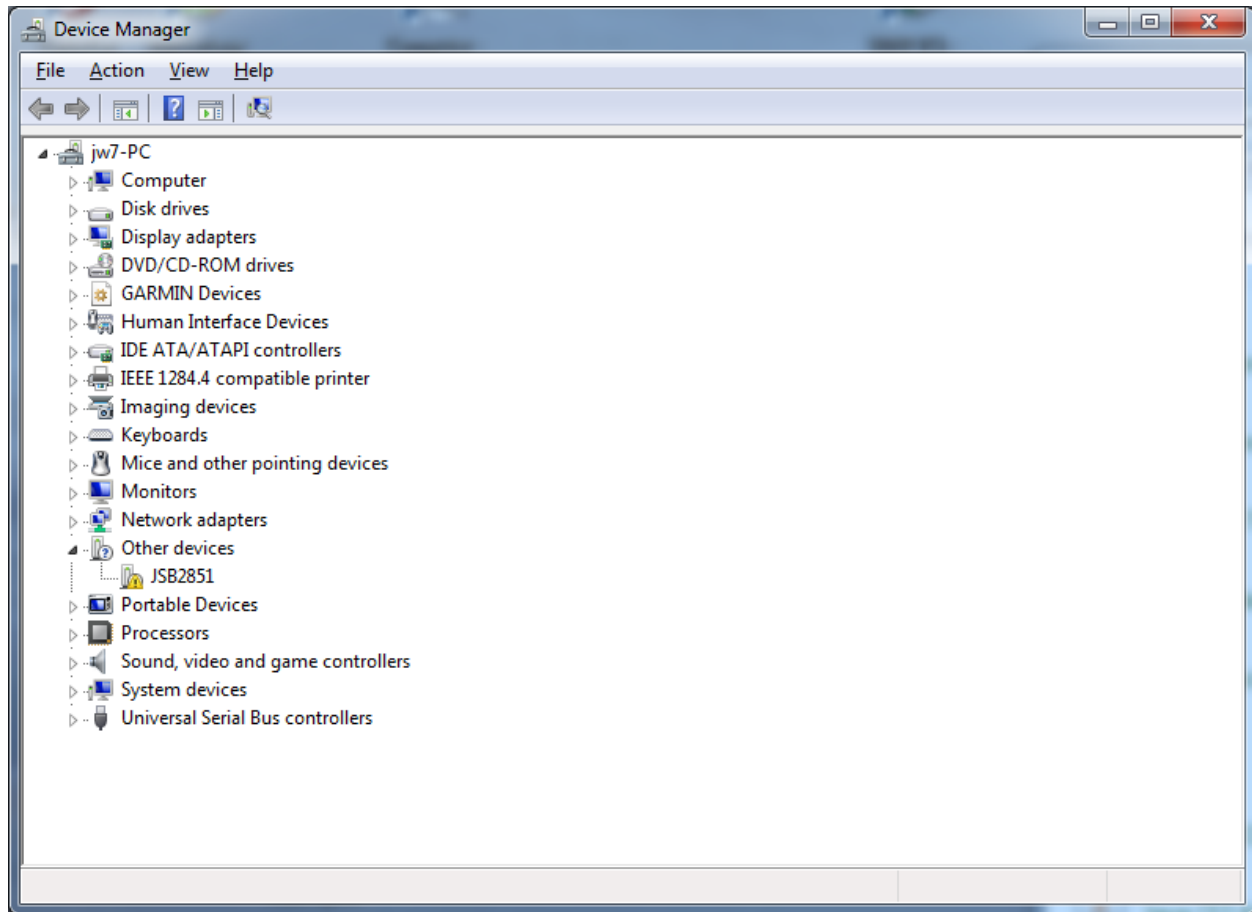
Using start button, run the Control Panel and select either "view by" Large Icons or Small Icons

Click on Device Manager



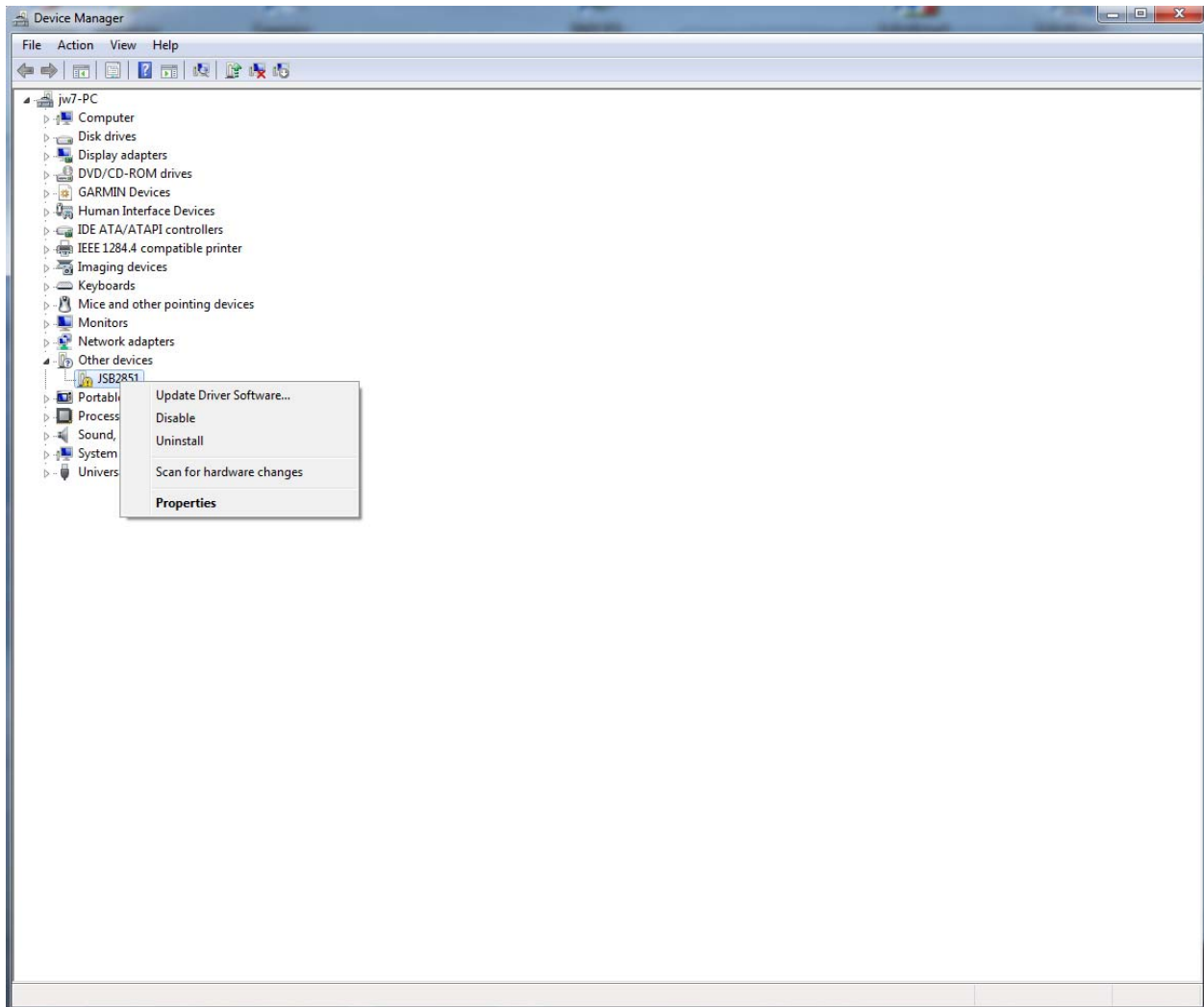
Driver Installation Windows 7

Under "Other devices" the model number for the J-Works device will be shown with an yellow exclamation point by it.



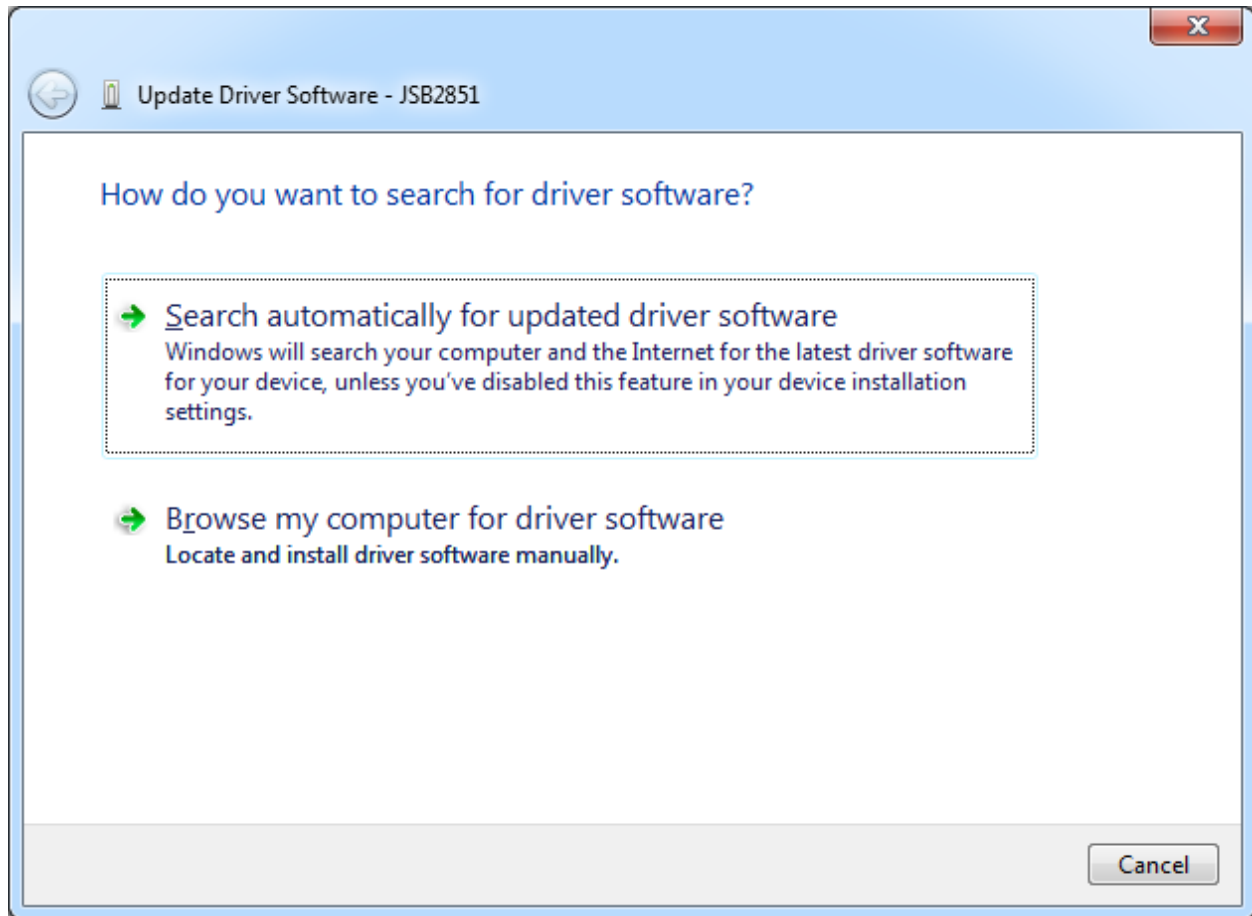
Driver Installation Windows 7

Right click on device and select Update Driver Software



Driver Installation Windows 7

Click on "Browse my computer for driver software"



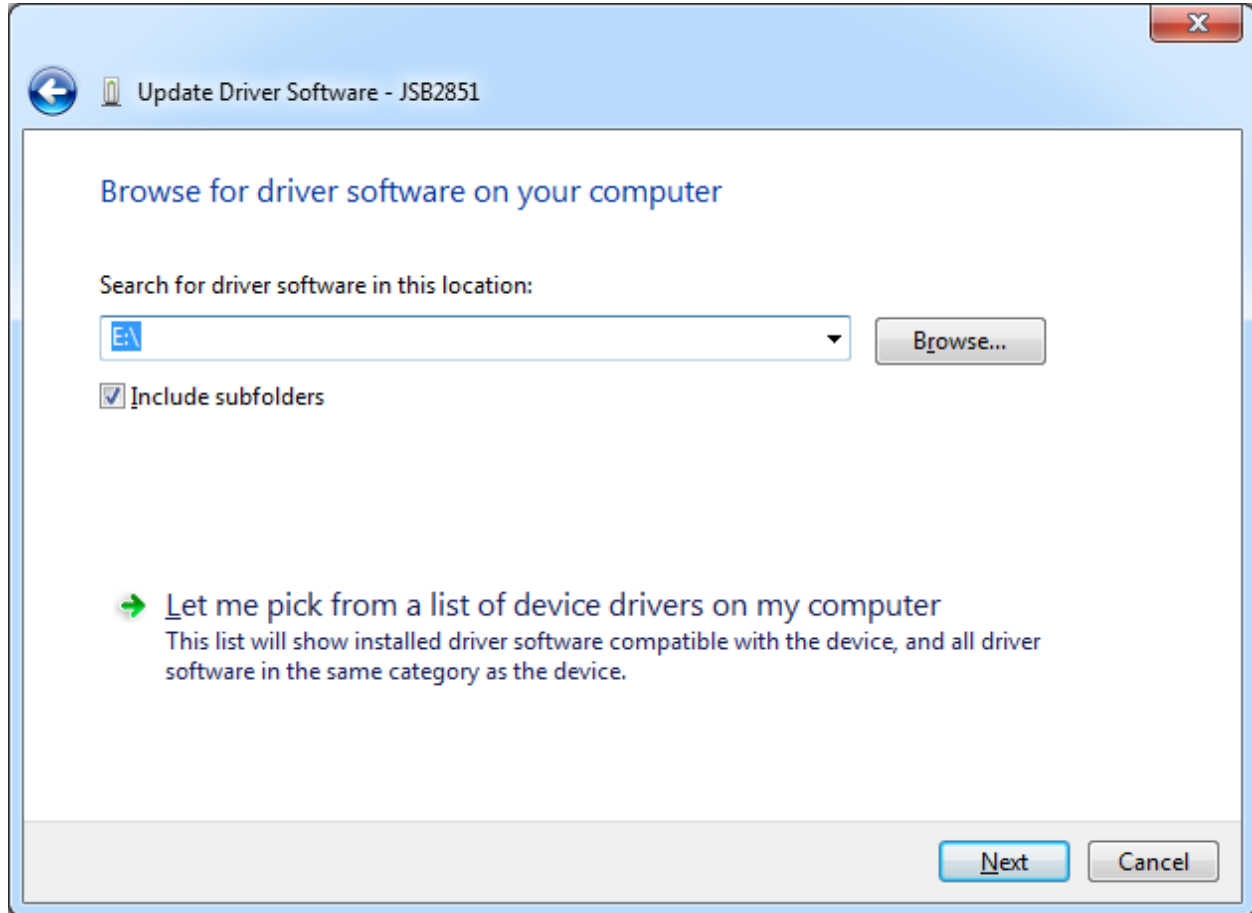
Driver Installation Windows 7

Make sure device CD from J-Works is in your CD driver and "browse" to that location

or

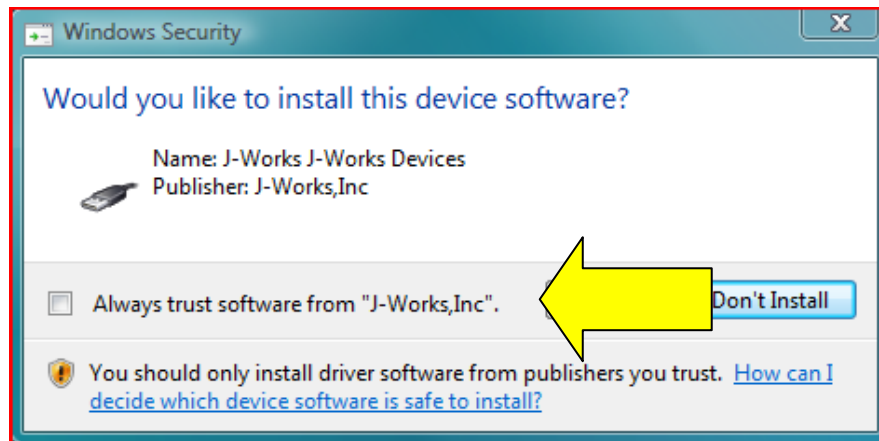
Download zip copy of CD from our web site under module web page, unzip it, then browse to that location

Click Next, after location is in box on screen

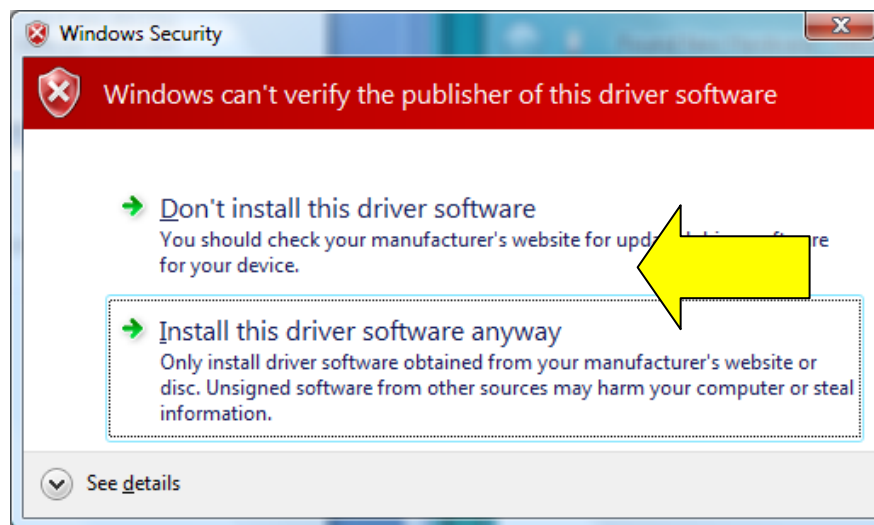


Driver Installation Windows 7

One of two screens will show up:



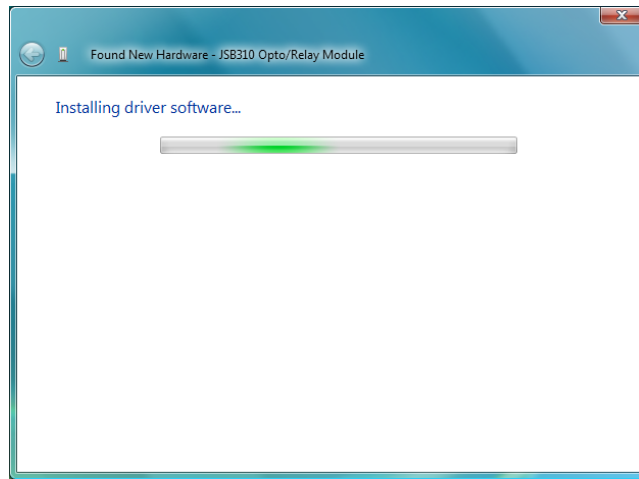
Or



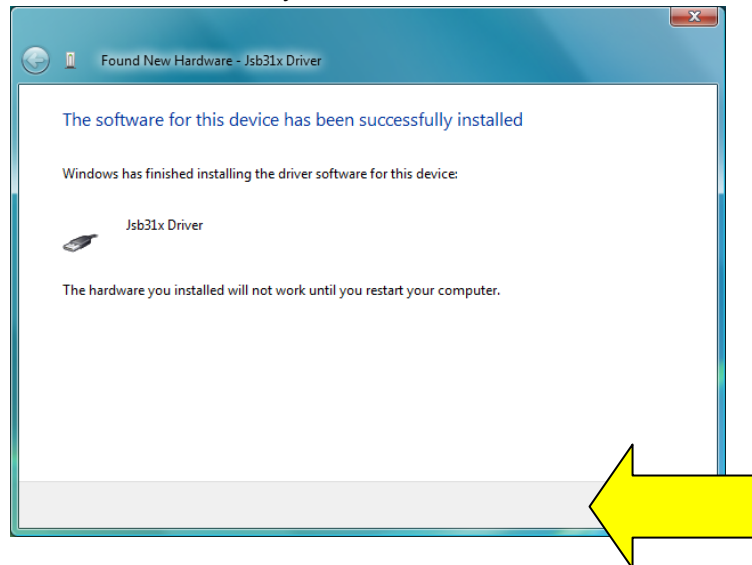
Click on: **Install** or **Install this driver software anyway**

Driver Installation Windows 7

Installing driver software message will appear



The software for this device has been successfully installed. *Click on: Close*



Driver Installation Windows 7

Driver Load Using DPInst

If a dedicate download does not currently exist for the module download our zip file Win7Ginstall and either in the 32bit or 64 bit directory copy the four (4) 32bit or 64bit driver files into the correct directory. Then run the batch file and follow the instructions.