

JSB315 Driver Installation Instructions



Below you will find step-by-step sample instructions to download and install JSB315 Relay Module driver software with the Windows operating system. Some steps may differ according to your operating system and settings.

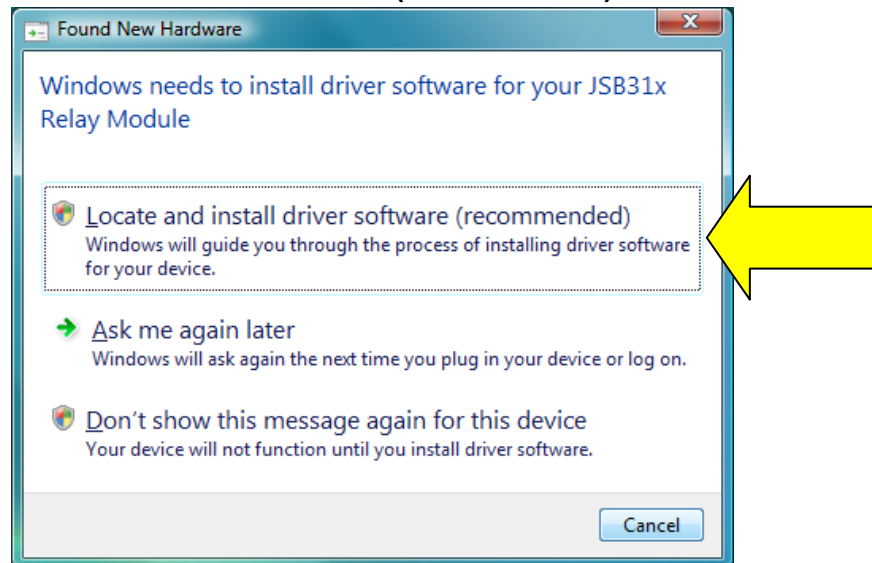
System Requirements

Your computer needs these resources as a minimum to run JSB315 Relay Module driver software:

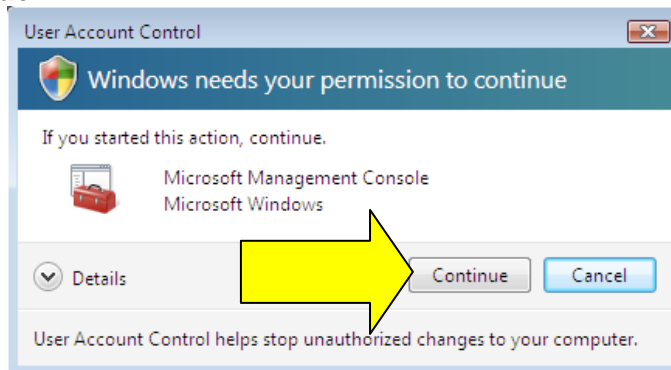
- Windows XP or higher.
 - 256 MB RAM (512 MB RAM recommended)
-

1. Plug in the JSB315 Module. The hardware installation wizard window should automatically appear. *If you insert the JSB315 CD before step 4 Windows Explorer may open automatically, close the window.*
-

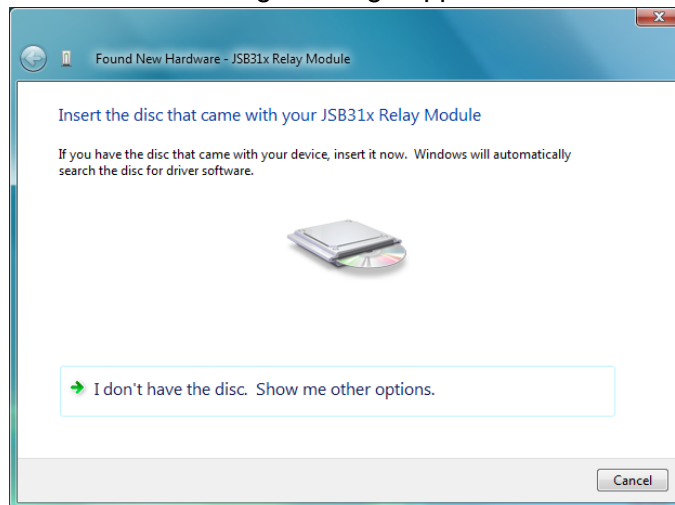
2. *Click on:* **Locate and install driver software (recommended)**



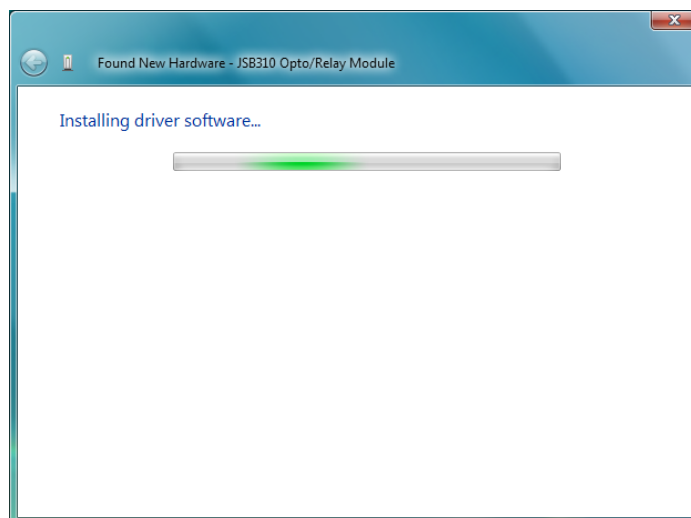
3. Click on: **Continue**



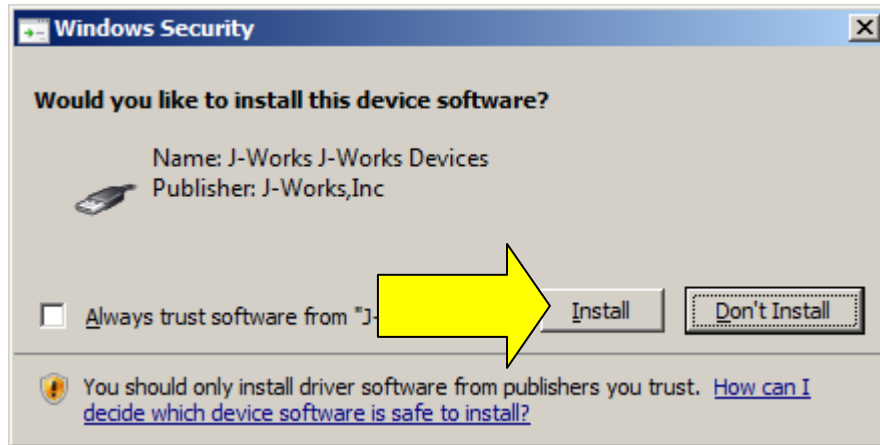
4. Insert JSB315 CD when the following message appears



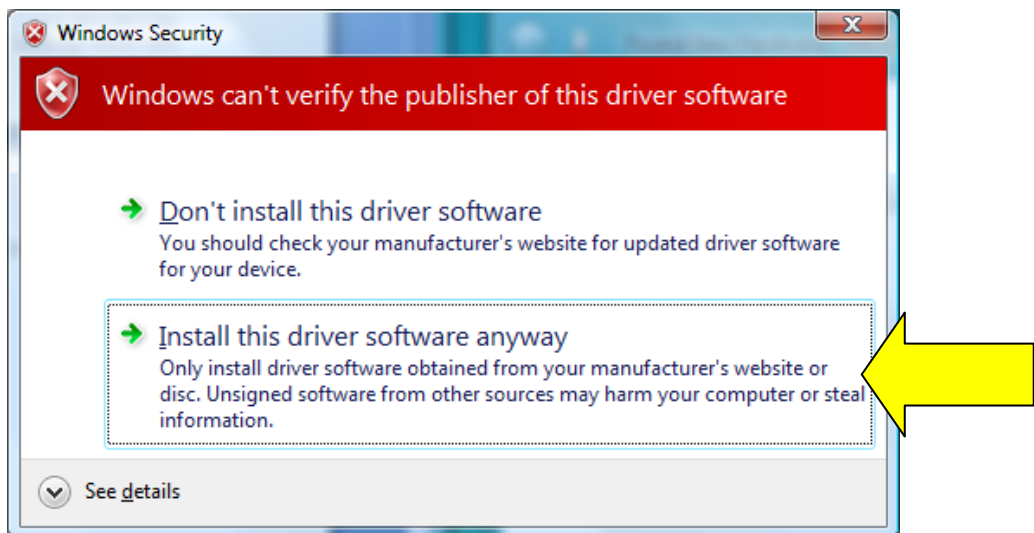
5. Installing driver software message will appear



6. One of two screens will show up:

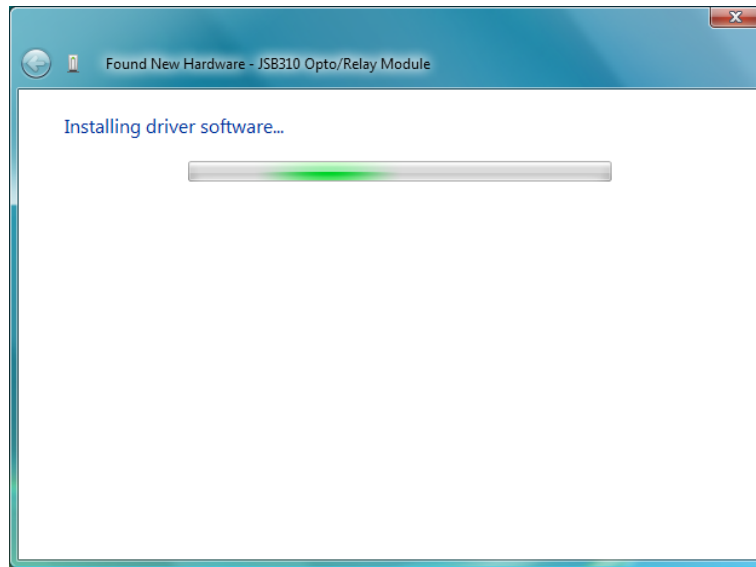


Or



Click on: **Install** or **Install this driver software anyway**

7. Installing driver software message will appear



8. The software for this device has been successfully installed. *Click on: Close*

